

Lane Homes & Remodeling, Inc.  
12536 Patterson Avenue  
Richmond, Virginia 23238

**(804) 784-0012** (Richmond)  
**(434) 973-2600** (Charlottesville)

SPRING

# BUILDING & Remodeling Tips

2009

PRSR STD  
U.S. POSTAGE  
**PAID**  
HICKORY NC  
PERMIT NO 212



**LANE HOMES**  
& REMODELING, INC.

"We work for the nicest people"  
[www.LaneBuilt.com](http://www.LaneBuilt.com)

**Celebrating our 25th Year!**

Now Serving Charlottesville  
(434) 973-2600

Courtesy of Lane Homes & Remodeling, Inc.  
Virginia Class A Contractor 2701029125A



## Home Sweet Hideaway

Americans are rediscovering the homestead. After years of believing the only place to eat was in a restaurant and the only place for entertainment was at a movie theater, we're choosing to stay home more and we're loving it! Now we're looking for ways to make our homes the place where we feel most vibrantly alive and peacefully contented.

*(continued on page 2)*

- Home Sweet Hideaway
- Wanna Be in Hot Water?
- Smart Carpet
- Fusion of Color Trends
- Design/Build Remodeler

IN THIS ISSUE

## Wanna Be in Hot Water?

Stop planning your days around your hot water supply. With a **FREE** Rinnai tankless hot water heater you can savor an endless supply of fresh hot water for bathing, cooking, dishes, laundry, and all the other countless ways hot water enriches your life.

Rinnai tankless hot water heaters are ENERGY STAR® qualified with a sleek, modern design. Lightweight and compact, they have a commercial-grade heat exchanger. They work with natural gas or propane and have an energy factor of .82 for both gas types.

**Lane Homes & Remodeling, Inc.** will furnish, **FREE**, one efficient, ENERGY STAR qualified Rinnai tankless hot water heater (model # R94LS) and an allowance of \$250.00 towards installation with every construction contract of \$50,000 or greater signed before July 31, 2009.



**Rinnai**  
TANKLESS WATER HEATERS

**Live Green**  
**Live Responsibly**

**TELEPHONE** (804) 784-0012

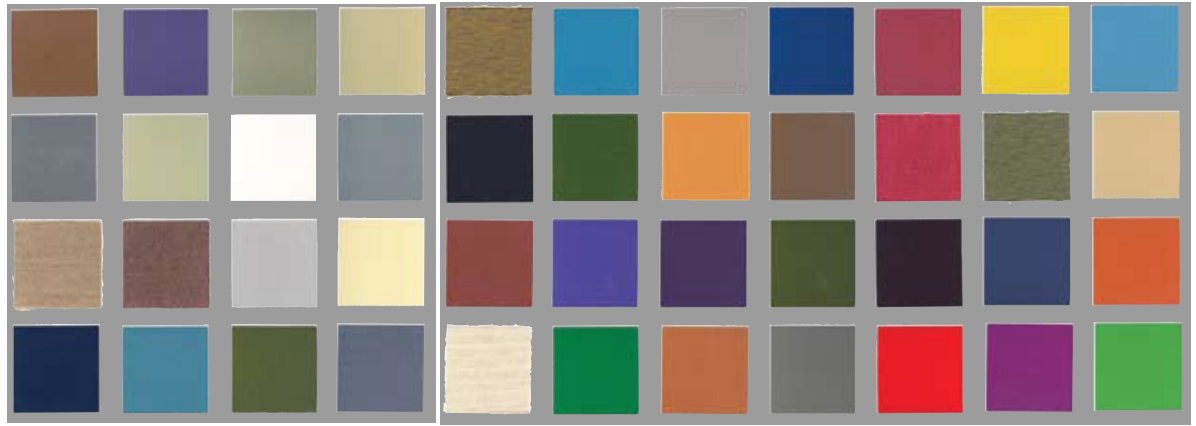
[www.LaneBuilt.com](http://www.LaneBuilt.com)

**EMAIL** [info@LaneBuilt.com](mailto:info@LaneBuilt.com)



# A Fusion of Color Trends

By Barbara Schirmeister,  
ASID, CAUS, DC



Portions of the Interiors 2009-2010 color forecast, which exhibit the various directions. (Courtesy of The Color Association of the United States CAUS), [www.colorassociation.com](http://www.colorassociation.com).

“Color dichotomy” describes the color forecast for 2009-2010 for residential and commercial interiors from the Color Association of the United States (CAUS), a forecast of color trends used by manufacturers of environmental and interior products. The palette exhibits both contrast and contradiction, reflecting uncertain and chaotic circumstances as we approach a new decade of the 21st century.

## Urban Neutrals

Urban neutrals are the core:

- No-colors – a bit off kilter and moody, such as sepias, taupes, tobaccos, bronzes and off-browns;
- Whites – speak of purity, luxury, the ethereal and a new start; it acts as a stage set for beautiful color combos.
- Gray – Definitely the new leading family. We see “techie” grays alongside of elegant taupes, metallic silvers and graphites.

## Graphic Brights

These vibrant, energetic colors are represented with new neons, acid and fluorescent brights, electric primaries, and the bold contrast of black and white. The graphic brights punch up the urban neutrals and the black and white story.

## Eco-colors

Driving influences on color and design are sustainability and ecological concerns. These colors are familiar and comforting

and include pre-washed hues, organic dyes and tender colorations inspired by nature.

- Cheerful, sunlit golds and yellows;
- New botanical greens as fresh grasses and new leaves, celadons, clean tropicals and jades;
- Reds are important – from terracottas and pinks to crimson;
- Orange becomes coral, copper and cantaloupe;
- We will have blue in all its glory: sky blue, periwinkle, cobalt, cornflower, royal, nautical, lavender blue and a plethora of spa-influenced blues. Purpled blues and blued-greens shift into a new range of teals and aquas. The blue palette will play off of the urban neutrals and metallic segments of the palette.

## Luster and Shimmer

Sparkle and shine has resurfaced with a vengeance as glitz, dazzle and shimmer. Luster adds life to deep shades. This contemporary fantasy embraces glamour in all forms and applauds over-the-top drama in design. Metallics are a major influence in reflective color. Tarnished, burnished, polished or brushed, they add to the neutral palette. Choose from an array of silvers, coppers, bronzes or precious metals.

Finally, there will be an emphasis on imagination, fostering a mix of unusual color combinations. ■



Echo Recycled Glass by Crossville, designed by Barbara Schirmeister, addresses two important trends: luster and shimmer, which are adorning products everywhere; and the world's concern with sustainability and the environment.



Crossville's Modern Mythology Natural Stone Collection represents some of the new neutrals and the graphic blacks and whites in the 2009-2010 forecast. Barbara Schirmeister designed the collection.



Internationally renowned color expert Barbara Schirmeister, ASID, has been a longtime member of the CAUS Interiors Committee, helping to formulate the annual Environmental/Interiors Forecast palette. She has served for many years as color consultant to a number of major companies.

# Design/Build Remodeler

**CREATING SPACES  
FOR THE WAY YOU  
WANT TO LIVE**

Our Proven Process  
is what keeps our  
clients coming back  
to us time and time again.  
We know the best way to  
ensure a  
successful end result  
is to carefully plan  
a detailed proven path  
from the very first  
consultation.



**BEFORE**

**(804) 784-0012 Richmond  
(434) 973-2600 Charlottesville**

**www.LaneBuilt.com**



**WE LISTEN.**



**WE DESIGN.**



**AFTER**

**WE REMODEL.**