

Building & Remodeling Tips

Courtesy of Lane Homes & Remodeling, Inc. Design/Build  AUTUMN 2003

LANE HOMES & REMODELING, INC.

12536 PATTERSON AVENUE • RICHMOND, VIRGINIA 23233

Virginia Class A Contractor 2701029125A

Phone: 804-784-0012

Fax: 804-784-0025

E-mail: info@LaneBuilt.com

Visit our website!

www.LaneBuilt.com

PRSR STD
U.S. POSTAGE
PAID
HICKORY, NC
PERMIT NO. 212

Going to the Movies

The smell of freshly popped corn, the aisle lights guiding you to your seat, the plush recliner adjusting with built-in motorized controls, the wide screen covering the wall in front of you—all of this suggests that you are really “at the movies.” The lights dim, the beams of the projector hit the screen, the sound begins to envelope you with a heart-thumping intensity—and you are off to the magical world of a dedicated home theater.



Photo: Courtesy of Zach Simpson, Innovative Systems

(continued on page 2) *A luxurious dedicated home theater as seen from the cushy comfort of the lounge seating.*

Inside This Issue...

- Lane Homes: Leading Design/Build Firm
- Flooring Trends: Bamboo Flooring
- Emotional Sanctuary at Home
- The Perfect Answer

Lane Homes & Remodeling, Inc. named Leading Residential Design/Build Firm for 2003

Design/Build Business magazine has named **Lane Homes & Remodeling, Inc.** one of the **Leading Residential Design/Build Firms** for 2003. Only twelve companies nationwide were awarded this honor.

The prestigious panel of judges looked at many areas of each company including: business systems; business development; commitment to employees, community and industry;

and consistency in delivering a superior product and superior service.

Edward Lane, Jr., Vice President of **Lane Homes & Remodeling, Inc.**, said, "Providing clients with an honest value for their investment has been the cornerstone of our company since we first opened our doors in 1984. It is gratifying to have this standard recognized nationally."

□



Going to the Movies

(continued from page 1)

An entertainment room is a very popular space today for homeowners to spend time in. This is a multipurpose room, which may include a fireplace, pool table, wet-bar, game table, sitting area with sofas and chairs, and a large-screen television. It is a wonderful, inviting place for people to gather and engage in a wide variety of activities together.

However, when you describe a room designed with the express purpose of accurately re-creating the theater experience, right down to the tremor you feel in the floor when the aliens land, you are talking about a dedicated home theater. Here, away from the crowds and the distraction of other movie patrons whispering during the quiet scenes, you can fully enjoy the show.

These windowless rooms use dimmer-controlled ambient lighting to create the mood. Careful attention is paid to room dimensions and design. For optimum viewing and listening, the seating is placed at the proper distance from the screen, the floor may be ramped or have risers, and the walls are often nonparallel, projecting outward from the screen.

The speaker placement and selection is calculated to achieve surround sound.

Dolby digital sound consists of six speakers and a low bass subwoofer installed throughout the room, either in the floor or in the walls. The ceiling, floor and walls are soundproofed to help reduce the transmission of sound into other parts of the home.

To accurately replicate the film as closely as possible to the way the directors intended it to be, a home theater uses a wide screen with a separate projector, which is usually suspended from the ceiling. A direct-view television set, in comparison, will cut off a few inches of the picture.

The screen may be covered by drapery, which opens automatically when the lights are dimmed, as in a traditional movie theater. In other home theaters the screen may remain exposed, or it can be recessed into the ceiling and dropped



The same home theater, viewed from the opposite direction, showing the ceiling mounted projector and the wall of equipment in back.

down for viewing. In the back, an alcove encloses the audio and video support equipment.

The budget for building a dedicated home theater will most likely be higher than that for an entertainment room. However, a home theater creates a very special environment that simply cannot be captured in a room where other activities are going on. For certain people, the pleasure of watching in their own home a favorite movie in its entire cinematic splendor, makes the price tag well worth it.



FLOORING TRENDS: Bamboo Flooring

When you think of bamboo, you may not immediately envision your dining room floor. However, bamboo has been used as a structural building material in Asian cultures for centuries. Now, an increasing number of homeowners in America are finding it to be a wonderful flooring material.

Bamboo has a clean, warm, elegant look that is also unusual and exotic enough to attract favorable attention. It is a durable flooring material, and can be harder even than oak and more dimensionally stable than maple, depending on the hardness of the particular plants from which it is processed.

One very appealing advantage bamboo flooring offers is that it is produced from an environmentally sustainable and rapidly renewable resource. Hardwood trees require 40 to 60 years to grow.



Exquisite site-finished flat grain "caramelized" bamboo flooring.

Bamboo is a fast-growing grass, and harvesting it is like cutting your lawn. The plant is not destroyed, but rather continues to grow—about 40 feet in three years.

The bamboo is cut into one-inch wide strips that are laminated together to form planks of similar size to hardwood flooring. The strips can be laminated horizontally,

so that the bamboo appears as long, one-inch wide stripes on your floor. In another method, the bamboo strips are laminated vertically, and the bamboo appears as long, 1/4-inch stripes.

The bamboo, left in its natural state, is a beautiful blonde color.

Carbonized bamboo flooring results from a process of heat and pressure being applied to the bamboo. This process turns the bamboo a rich amber color that permeates through the bamboo. This process also produces a slightly softer material.

Caring for a bamboo floor is basically the same as for any traditional hardwood floor. Vacuum or sweep the floor regularly, and remove spills promptly. Clean the floor with a hardwood floor cleaner that does not contain wax or ammonia. Place mats at the exterior doors to collect sand and grit that could damage your floor finish, and install protectors under the legs of furniture.



Photo: By Steven Young / Courtesy of Timbergrass LLC
www.timbergrass.com

Photo: Courtesy of Zach Simpson, Innovative Systems
www.innovativesystems-av.com

Emotional Sanctuary at Home

A spa is a quiet, soothing environment, designed specifically to help you relax, refresh and rejuvenate your mind, body and spirit. Everything in the spa, from the visual beauty to the calming sounds, is carefully placed to assist you in reaching this goal. After the rapid pace of a typical day, who would not welcome the opportunity to take a much-needed break at the spa?

Now you can spend time everyday in the comfort and familiarity of your very own home spa in your bathroom. Manufacturers, like Kohler Co., have designed bathroom products that make that desire possible.

Celebrating the rhythmic grace and beauty of flowing water and the calming integrity of natural materials, Kohler Co. launched

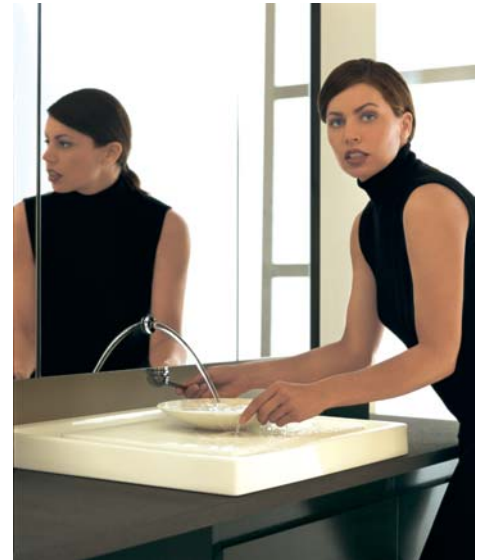
the Purist™ Suite this year, the industry's first coordinated home spa collection for the bath. Portraying contemporary, minimalist aesthetics and leading-edge technology, the Purist home spa products make a simple and elegant design statement.

Assimilating such unique elements as natural lavastone countertops; artistically designed wet-surface lavatories and faucets integrated within mirrored storage to capture the visually arresting interplay of flowing water; and an ultra-deep soaking bath with effervescence and chromatherapy, the Purist Suite captures the very base elements of Earth with Zen-like simplicity to create pure harmony with water. With more than 10 components,

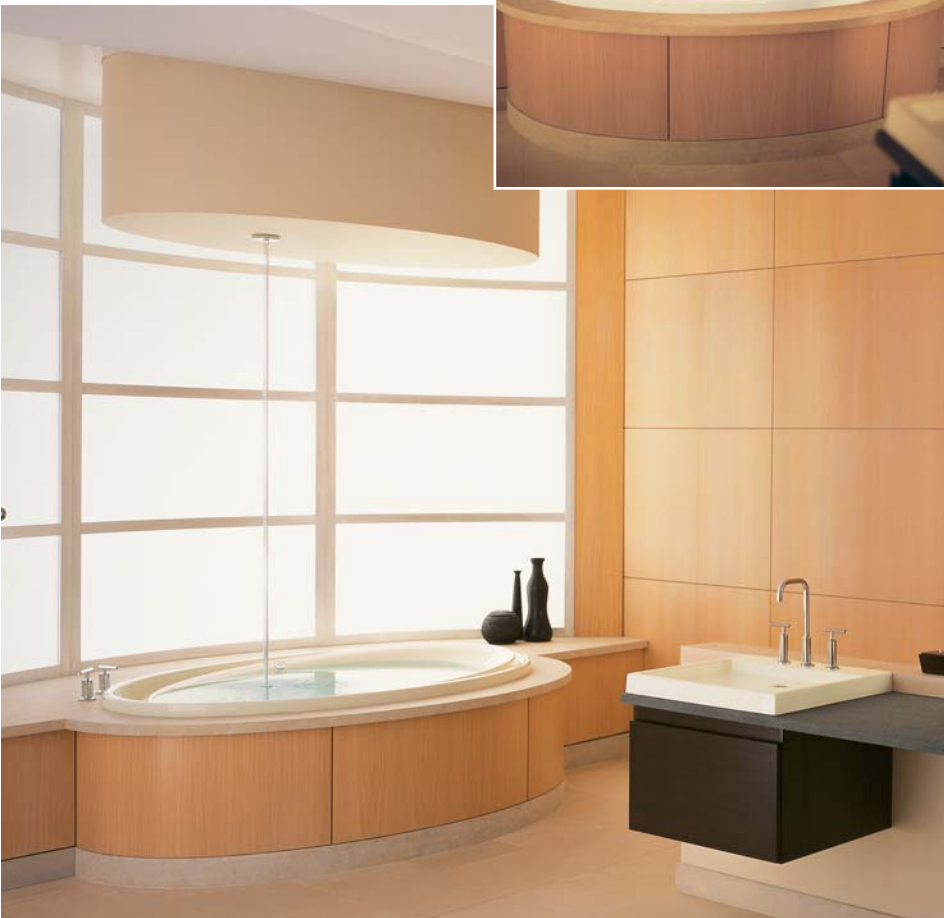
the Purist Suite celebrates and expands upon timeless bathing rituals that offer you, the homeowner, an enchanting escape—an ultimate peacefulness and sense of tranquility.

□

Below and Right: The Purist bath is engineered of high-gloss acrylic to be a shell within a shell, incorporating an overflow rim that allows the individual to be fully immersed. In addition, the bather has the option of adding effervescence and chromatherapy.



Above: The above-counter Wet Surface lavatory has a raised, flat center surface that sits flush with its outer edges. When water cascades on to its surface, it slides away into a surrounding channel. Mounted to the wall, the mirrored cabinet with an integral laminar-flow faucet creates a stunning image of flowing water.



Left and Above: The Wading Basin lavatory boasts planes similar to its Wet Surface counterpart, but is characterized by a shallow flat basin. Both the Wet Surface and Wading Basin lavatories function with two removable fine porcelain hand basins. The open-bottom hand basin creates a seal with the lavatory's surface when filled with water, so it can be used as a wash basin. Simply lifting it releases the contents. The second hand basin is designed as a bowl and can be used with the lavatory or to transport spa treatments or other contents to additional areas within the room.



The Perfect Answer

Question: What do a dark, cramped kitchen; one sunroom in so-so shape; an old wooden deck and a lack of entertainment space have in common?

Answer: They are long-gone, history, kaput, outta here!

When Abbott and Beth Barclay presented **Lane Homes & Remodeling, Inc.** with their wish list, they knew our designers were up to the challenge. Requirements: (1) improve the function of the kitchen, add space, add granite countertops, a snack bar and a breakfast nook, (2) increase the informal entertaining space of the home both indoors and out. (3) improve overall usability and traffic flow, (4) and, of course, make all the changes look like part of the original house!

After measuring and photographing the original areas from all angles, **Lane's** designers went back to the office and began brainstorming ideas to create the perfect solution. Soon, the design was complete. A new breakfast area with a sunroom-like quality floods the kitchen with natural light. The old kitchen island was removed and replaced with a new island cabinet complete with snack bar and granite countertop in a beautiful Ubatuba pattern. The granite was continued throughout the kitchen to replace the old worn-out countertops and backsplashes. The old sunroom was in bad shape so it was gutted and completely rebuilt. The wall between the rebuilt sunroom and the breakfast area was removed and replaced with stately colonial columns in keeping with the style of the home.

These columns visually separate the spaces while leaving the area open and accessible. Now, the new kitchen, breakfast area and sunroom are bright, sunny and easy to use.

A new 18' x 24' family room was added opening off the sunroom and study. The skilled craftsmen at **Lane Homes & Remodeling, Inc.** took meticulous care in matching existing brickwork, window



before



after

the house with easy access from the home office, breakfast room and family room. The circular traffic flow is perfect for casual outdoor entertaining, but also provides cozy spots for quiet evenings.

Abbott

styles, and trim so the new addition seems to be part of the original home. A vaulted ceiling adds to the feeling of spaciousness, lots of windows let in plenty of natural light, and there are French doors opening onto the lower terrace.

A-h-h-h, the terraces! With a brick foundation that matches the brickwork on the existing house, the three multi-level terraces are concrete stamped in a cool gray English slate pattern. Elegance with minimal maintenance. These expansive terraces extend across the

entire back of

Barclay said, "We knew from our first meeting that you shared our vision for our home. You, then, translated this vision into a design that was exactly what we were hoping for. Craftsmen who were professional, extremely talented and efficient turned the design into fact. We are absolutely delighted with the final results."

New kitchen, family room or sunroom addition, remodeled basement or attic, whatever your dreams for your home, call **Lane Homes & Remodeling, Inc.** at **784-0012** and let our experienced and talented design team create the perfect solution for you. □



Above: The kitchen snack bar invites one to take a seat and enjoy.



Right: A view to the cheerful sunroom from the new kitchen.