

Lane Homes & Remodeling, Inc.
12536 Patterson Avenue
Richmond, Virginia 23238
(804) 784-0012
www.LaneBuilt.com

AUTUMN BUILDING & Remodeling Tips

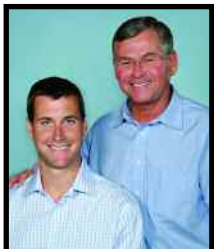
2005

PRSR STD
U.S. POSTAGE
PAID
HICKORY NC
PERMIT NO 212

LANE HOMES
& REMODELING, INC.

Celebrating our 21st Year!

Courtesy of Lane Homes & Remodeling, Inc.
Virginia Class A Contractor 2701029125A



Photos: By James F. Wilson/The New American Home 2005



Suite Serenity

After their last child moves out and is finally on his own, many homeowners these days are seizing the opportunity to expand their master bedroom into the adjacent empty bedroom space, creating a grand master suite. Then there are

(continued on page 2)

- Suite Serenity
- From Sizzler to Oasis in 3 easy steps
- The World's First
- Make a Splash

IN THIS ISSUE

From Sizzler to Oasis in 3 easy steps

The Brands changed their old backyard deck from a sizzler to an oasis in three easy steps.

- (1) They called **Lane Homes & Remodeling, Inc.**'s design team.
- (2) They played an integral part in the design process of their new outdoor living space.
- (3) They relaxed while the Lane production team transformed their blazing hot deck into a cool west end oasis.

(continued on page 4)



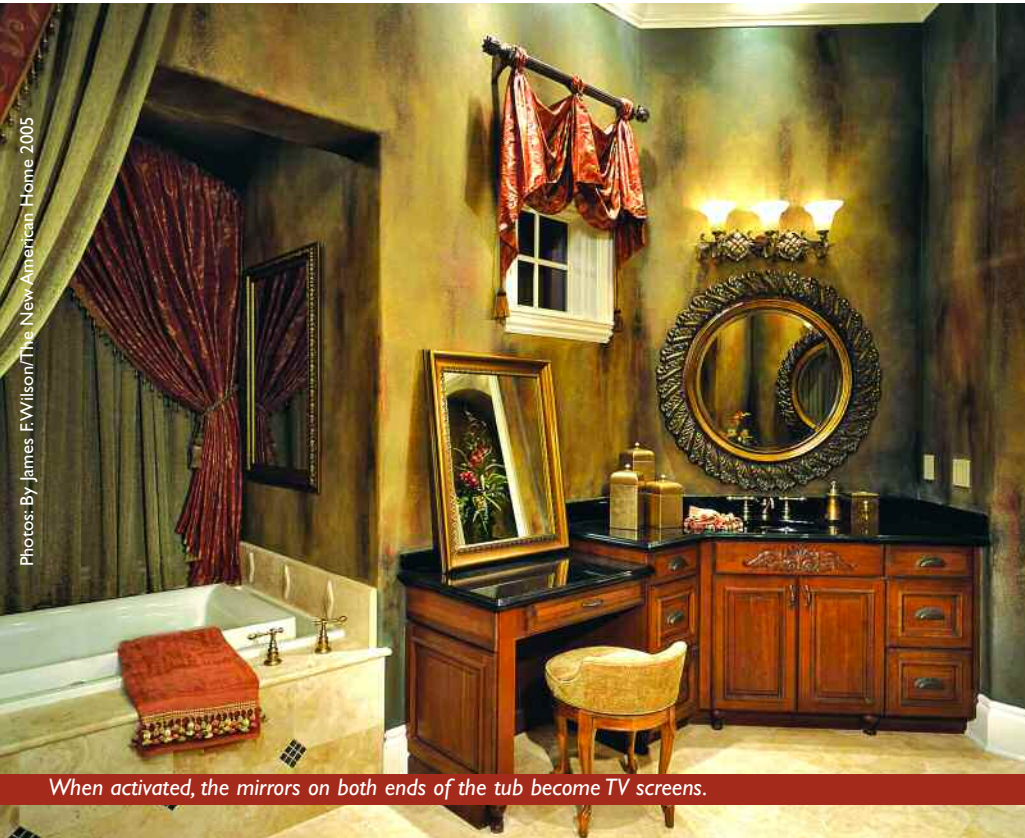
those parents who simply want a quiet respite from the pre-teens who seem to have taken over their house. An addition to their home provides a tranquil spot for a master suite retreat. Or perhaps it is simply that the homeowner spent some wonderful days in a five star hotel suite with all the creature comforts, and now wants to recreate that luxurious atmosphere with his own "house candy." Whatever the reason for the decision,



Stylish lighted closet rods add sparkle to this walk-in closet.



The folding glass wall expands the sitting room to the outside, bringing in light and fresh air.



When activated, the mirrors on both ends of the tub become TV screens.

master suites are the third most popular remodeling project today, right after kitchens and baths. With continuous remodeling shows on television as inspiration, people are ripping out, reconfiguring and adding on to their master bedrooms as never before.

The master bedroom suite of the 2005 New American Home is a perfect example of the kinds of amenities people are asking for in their new master suites. The bedroom itself is ample, with plenty of space for a mini-kitchen tucked into an alcove for late-night snacks. On the wall opposite the four-poster bed is the latest in electronic living—a home entertainment center with a 42-inch plasma screen. Through the door one gets a sneak peek at the bathroom and its sumptuous two-person walk-in shower with multiple body sprays, a rainshower head, and a comfortable bench. In addition, a Kohler Sok overflowing tub, as well as his-and-her vanities, a separate closet for the toilet and bidet, and a private outdoor garden with a hot tub complete the spa feeling. Just around the corner is a spacious walk-in closet providing drawers, cabinets and generous hanging capacity, along with the convenience of a full-size laundry room. The suite's flexible sitting room can serve as a library or an office, an exercise room, a game room, or a comfortable TV space, depending on the desire of the homeowner. But, most importantly, the entire master suite serves as a refuge from the hectic pace of life outside those serene walls. □

Using state-of-the-art laser-etching equipment, PictureThisOnGranite transfers pieces of art in minute detail onto black granite. The etching is then hand-painted, creating depth and definition. In an already glamorous kitchen, this granite sunflower mural is a real eye-catcher! The etching has been treated with a protective sealant that should be re-applied twice a year for continued protection.





The World's First

The world's first stand-alone built-in microwave drawer, the Sharp Insight Pro, can be placed at the most convenient height for frequent use. The drawer opens at the touch of a button. There is no need to remove the dish from the oven to check or stir the food. Attendees at the 2005 Kitchen and Bath Industry Show voted the Insight Pro the Best New Kitchen Product of the show.

Every year amazing new kitchen appliances are introduced to the market, each one promising to make our daily life more comfortable and efficient. Here are a couple of recent award-winners.

The world's first built-in capsule coffee system, the Miele CVA 2000 series, uses sealed Nespresso capsules, each containing just enough ground coffee for one cup. The appliance produces coffee, espresso, cappuccino, milk froth or simply hot water. The system can be set up underneath or integrated with the cabinetry, and it does not require a fixed water supply connection. The CVA 2000 series won Miele the prestigious international Red Dot award for product design.

■ Kitchens have become so much more than functional spaces in which to prepare meals. Homeowners are making very personal design statements with their kitchens. From elegant countertops to stylish wood cabinets, today's kitchens provide a virtual feast for the eyes. The most impressive feature of many kitchens is the stainless steel professional range or cooktop with the mighty hood overhead. And don't forget the grand finale—the decorative backsplash—strategically located between the two.

Make a Splash

It is when designing this important focal point in the kitchen that some of the most creative juices get flowing. Trendy backsplash treatments in contemporary-style kitchens range from copper or stainless steel tiles, to small glass mosaics. In more traditional-style kitchens, murals are popular using hand-painted ceramic or porcelain tiles, ink-impregnated tumbled marble, or laser-etched granite. Each of these products allows homeowners the chance to individualize their kitchen spaces in imaginative ways. □



Select your favorite photograph and StoneImpressions will turn the image into a unique stone mural for your backsplash. The inks used to create this fruit basket mural on tumbled travertine have penetrated permanently into the stone and are guaranteed for 75 years. The image is protected by two different sealants. Always use mild, non-abrasive cleaners for maintenance.

From Sizzler to Oasis in 3 easy steps

(continued from page 1)

■ Almost everyone with a large expanse of backyard decking knows how hot and unusable that outdoor area can be during our sweltering Richmond summers. Sizzling in the sun, inundated by mosquitoes and other flying insects, is not most people's idea of fun. What once was a popular add-on feature on many homes is quickly turning into an almost forgotten accessory.

Bill & Lisa Brand decided they had had enough of their old hot wooden deck and called the design team of Lane Homes & Remodeling, Inc. for help in maximizing their backyard enjoyment.

Using the Brand's list of wants and needs, our design team created a new plan that completely transformed the back of their home and gave them the outdoor living space they had dreamed about—a wonderful gazebo with stone fireplace, a new composite multi-level deck, and a bluestone patio—all designed for ease of entertaining and summer relaxation.

The spacious gazebo is a natural gathering spot. With its welcoming closeness to both the kitchen and family room, it's the perfect place to pull up a chair and relax with a cold drink.

A weathered bronze ceiling fan with blades cast to resemble palm fronds creates soft summer breezes when Mother Nature doesn't cooperate. On cool evenings, a cozy fire in the gazebo's stone fireplace takes the chill out of the air and brings back memories of campfires on the beach.

The new multi-level composite deck in a redwood finish takes advantage of large crepe myrtles that provide cooling shade during the hot summer months. On the gazebo level there is plenty of



“We love our new outdoor living space and are enjoying our garden more than ever.”

room for two grills going at the same time, guests mingling, and lots of summer fun. A small sheltered cove off the den provides a quiet retreat. The bluestone patio was specifically designed to be accessed from both the deck and the new lower level entertainment room, which is often used for activities such as wine tasting parties.

Lisa Brand told us "We love our new outdoor living space and are enjoying our garden more than ever. We had not used our old wooden deck in years and the new space, especially the gazebo, has become part of our everyday life. Working with Lane Homes & Remodeling, Inc. was a wonderful experience. The workmen were unobtrusive, so very pleasant, and they kept the construction area very neat."

Each project we design is as unique as the client who commissions it. The talented design team at **Lane Homes & Remodeling, Inc.** works closely with our clients to develop a space that more than satisfies their needs—it fulfills their dreams.

Call us at 784-0012 and put our design and production teams to work on your dream space. □



After



Before